

ROYAL LePAGE NORTHSHORE

2407 Marine Drive
West Vancouver, BC V7V 1L3
tel: (604) 926-6011

2520 WESTERN AVENUE, NORTH VANCOUVER

TOTALS*:

Main Floor: 679 sq.ft.

Upper Level**: 649 sq.ft.

Lower Level: 461 sq.ft.

TOTAL FINISHED: 1,789 sq.ft.

TOTAL UNFINISHED: 0 sq.ft.

GRAND TOTAL **: 1,789 sq.ft.

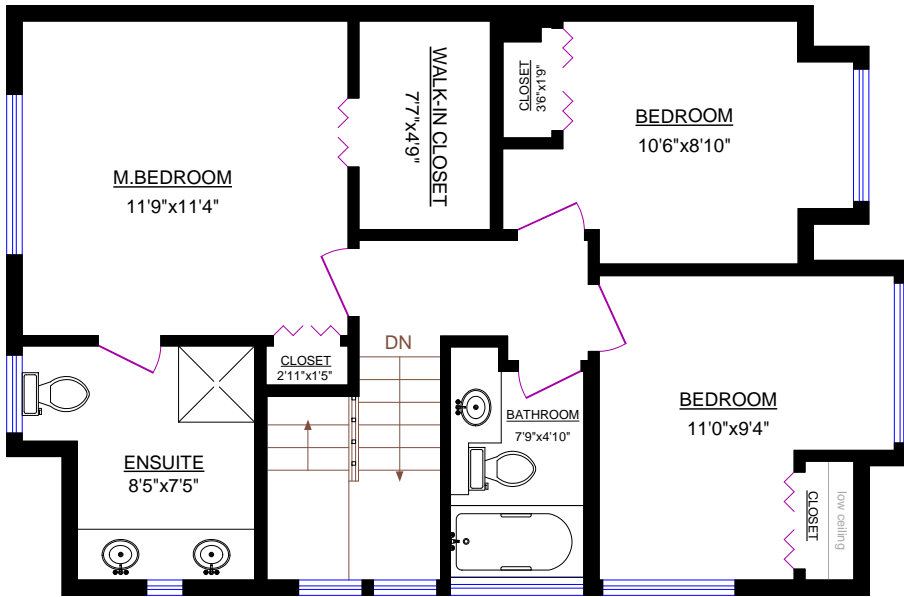
OTHER AREAS:

Crawl Storage: 184 sq.ft.

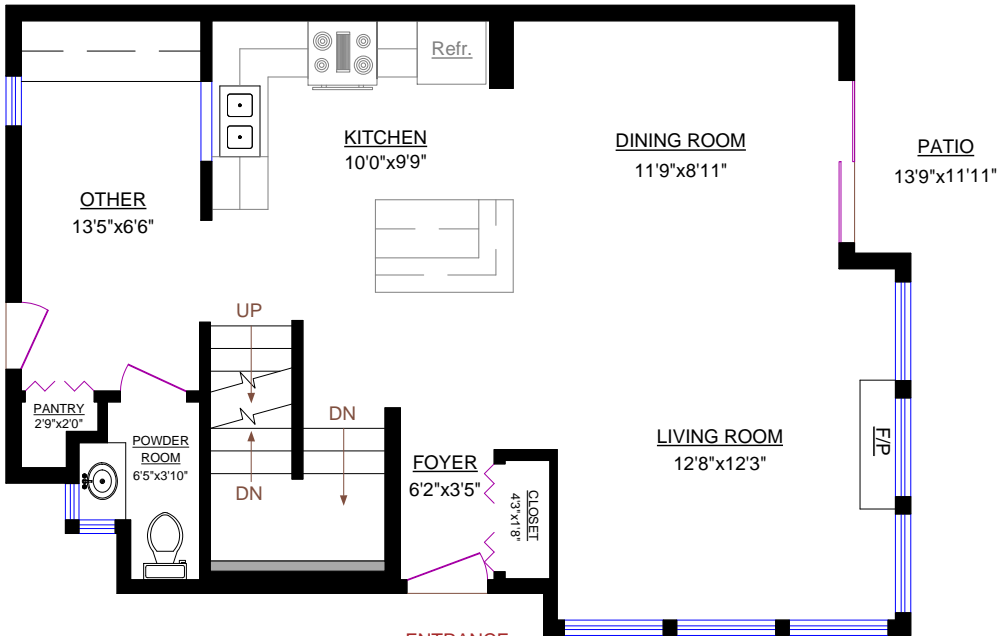
Garage: 20'3"x11'3" (ext.)

**** Does not incl. low ceiling area of 7 sq.ft.**

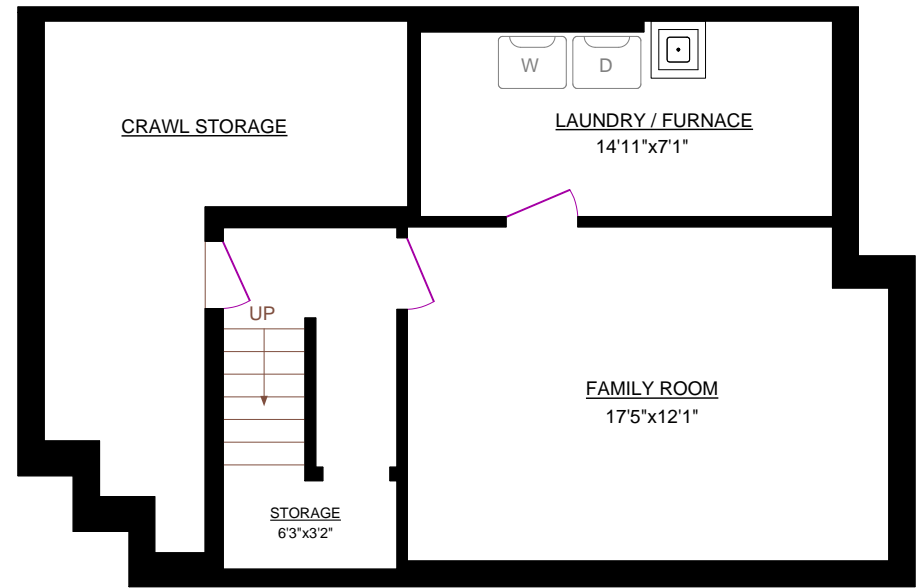
* Measured to exterior of walls and to the middle of the common walls
* These measurements are not taken from the Strata Plan.



UPPER LEVEL



MAIN FLOOR



LOWER LEVEL

