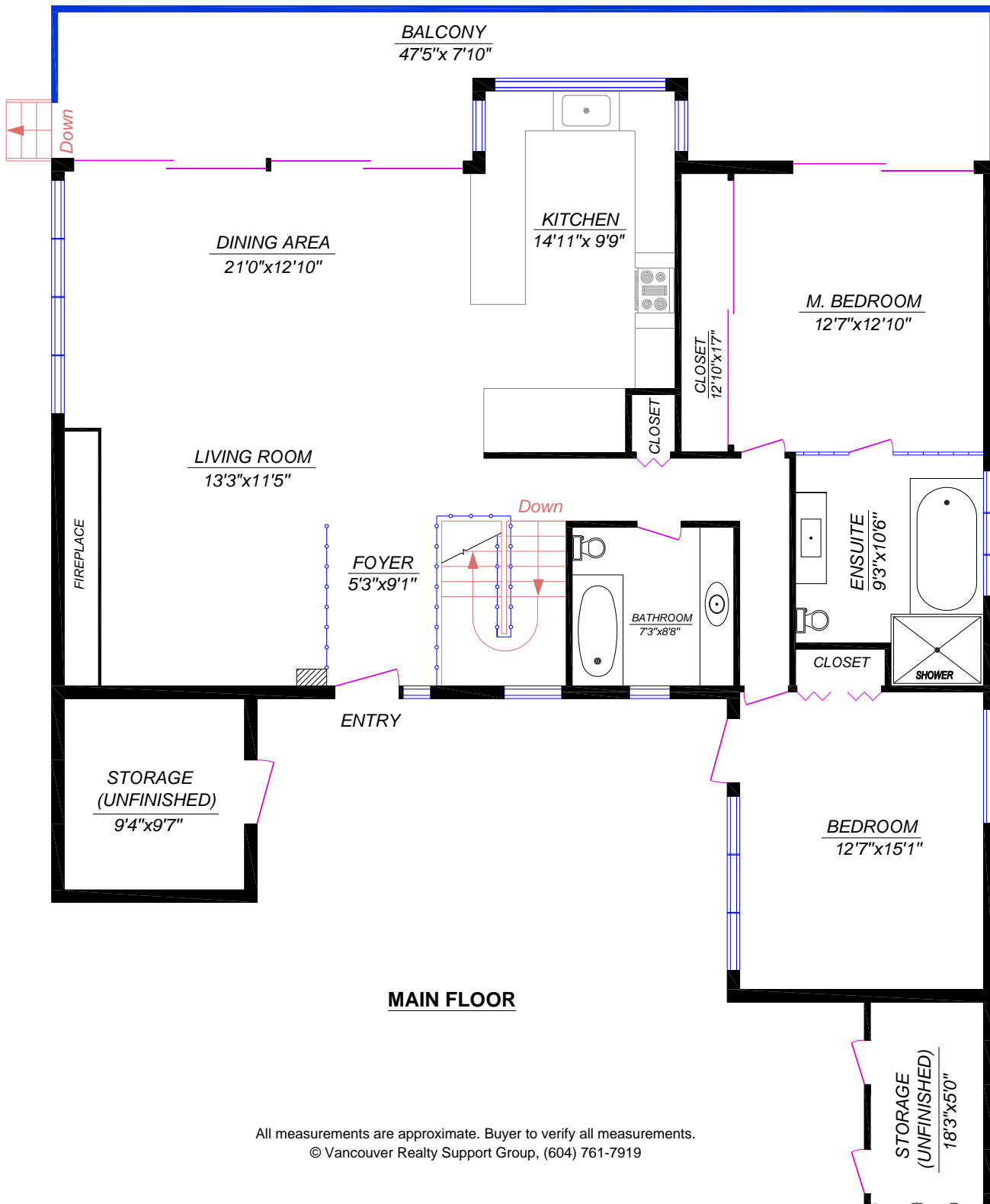


1965 22 ND STREET, WEST VANCOUVER

Main Floor: 1,553 sq.ft.
 Lower Level**: 1,294 sq.ft.
 TOTAL: 2,847 sq.ft.

Balcony : 338 sq.ft.
 Shed : 43 sq.ft.
 Storage : 110 sq.ft.
 Storage : 104 sq.ft.

** Incl. Unfinished Area: 46 sq.ft.



MAIN FLOOR

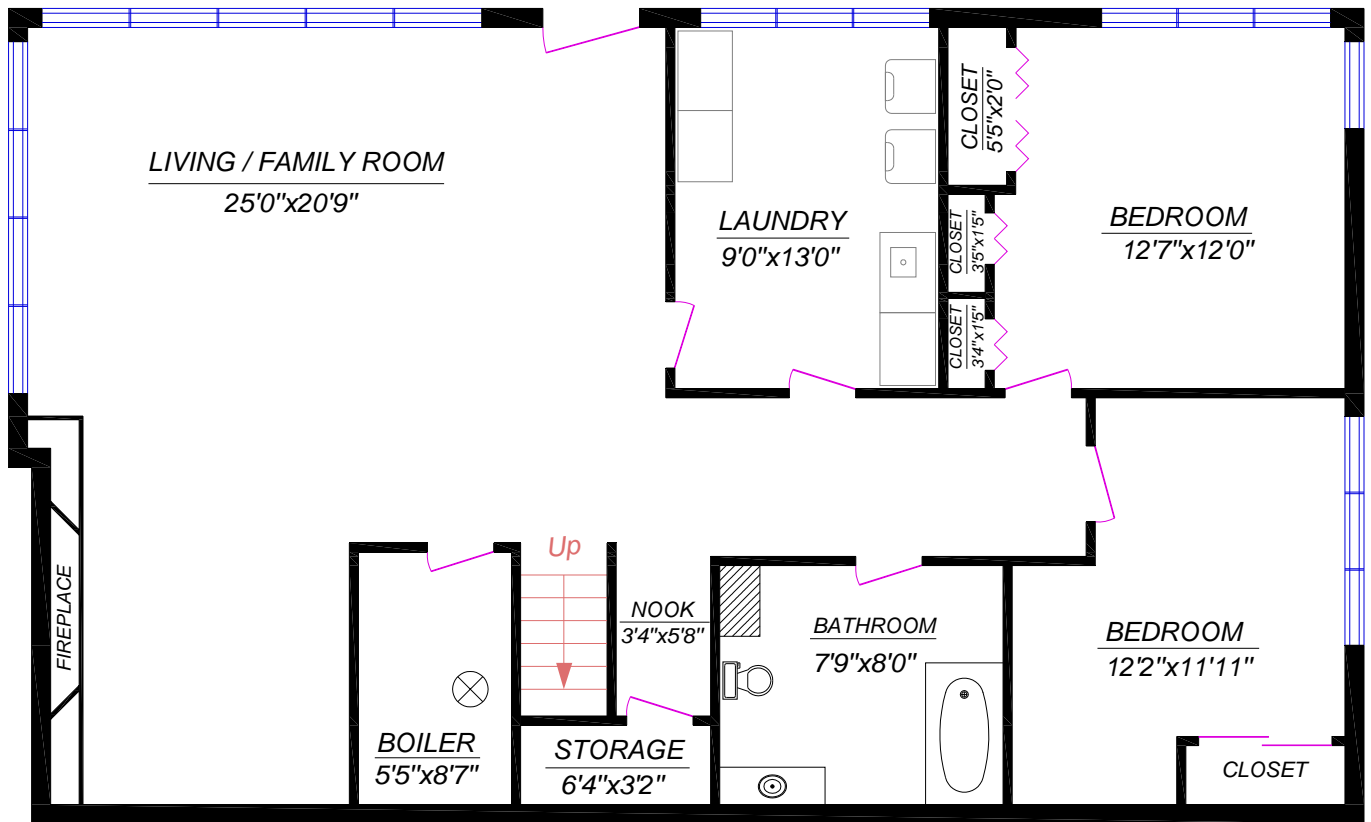
All measurements are approximate. Buyer to verify all measurements.
 © Vancouver Realty Support Group, (604) 761-7919

1965 22 ND STREET, WEST VANCOUVER

Main Floor: 1,553 sq.ft.
 Lower Level**: 1,294 sq.ft.
 TOTAL: 2,847 sq.ft.

Balcony : 338 sq.ft.
 Shed : 43 sq.ft.
 Storage : 110 sq.ft.
 Storage : 104 sq.ft.

** Incl. Unfinished Area: 46 sq.ft.



LOWER LEVEL